

OCXO (19.0 X 19.0 x 10.5mm)

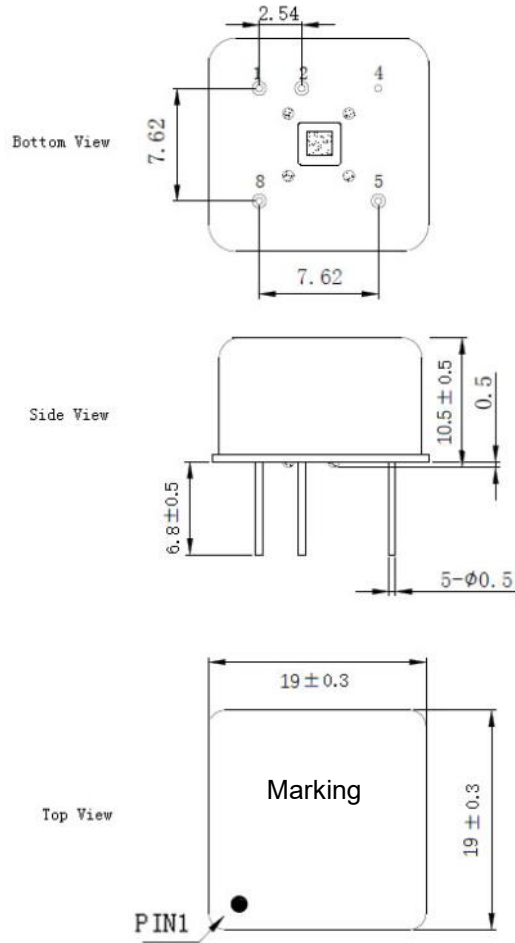
- ULTRA LOW CURRENT
- FAST WARM UP
- LOW PHASE NOISE
- HERMETICALLY SEALED



■ SPECIFICATION

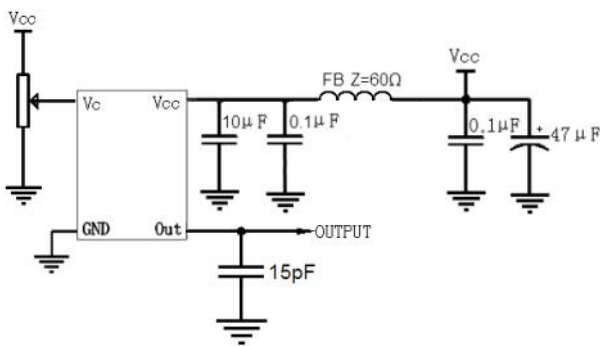
PARAMETER		MIN.	TYP.	MAX.	UNIT	NOTE	
STANDARD FREQUENCIES		10MHz, 20MHz, 100MHz			MHz		
FREQUENCY TOLERANCE				±200	ppb	@V Con = center V	
FREQUENCY STABILITY	vs. OPERATING TEMP			±5	ppb	Ref to 25°C	
	vs. SUPPLY VOLTAGE ± 5%			±2	ppb		
	vs. LOAD ±5%			±2	ppb		
	vs. AGING PER DAY			±1	ppb	Measurement referenced to frequency observed @ 25°C, after 30 days of operation	
	vs. AGING 1ST YEAR			±100	ppb		
	ALLAN VARIANCE				±0.005	ppb	after power on for 1hour ref. to 25°C; 1s
OPERATING TEMPERATURE RANGE		-40		+85	°C	See P/N Guide for options	
STORAGE TEMPERATURE RANGE		-55		+105	°C		
SUPPLY VOLTAGE	3.3 Volt	3.13	3.3	3.47	V		
	5.0 Volt	4.75	5.0	5.25	V		
REFERENCE VOLTAGE	3.3 Volt	2.85		3.05	V		
	5.0 Volt	4.5		5.0	V		
WARM UP TIME				1	min	TA = 25°C	
TURN ON POWER				260	mA		
STEADY STATE POWER				50	mA	TA = 25°C	
OUTPUT CMOS	LOAD		15		pF		
	LEVEL '0' (V _{OL})			20% V _{CC}	V		
	LEVEL '1' (V _{OH})	80% V _{CC}			V		
	RISE / FALL TIME			10	ns		
	DUTY CYCLE	45		55	%		
OUTPUT SINEWAVE	LOAD		50		Ω		
	LEVEL	5			dBm		
PHASE NOISE	@ 10Hz			-130	dBc/Hz		
	@ 100Hz			-150	dBc/Hz		
	@ 1KHz			-160	dBc/Hz		
	@ 10KHz			-165	dBc/Hz		
	@ 100KHz			-168	dBc/Hz		
EFC TUNING	CONTROL VOLTAGE	3.3 Volt	0	1.4	2.8	V	1.4V center
		5.0 Volt	0.5	2.5	4.5	V	2.5V center
	PULL RANGE				±0.4	ppm	
	VC PORT IMPEDANCE		100			KΩ	
	LINEARITY				10	%	Positive slope

■ PACKAGE DIMENSIONS (mm)

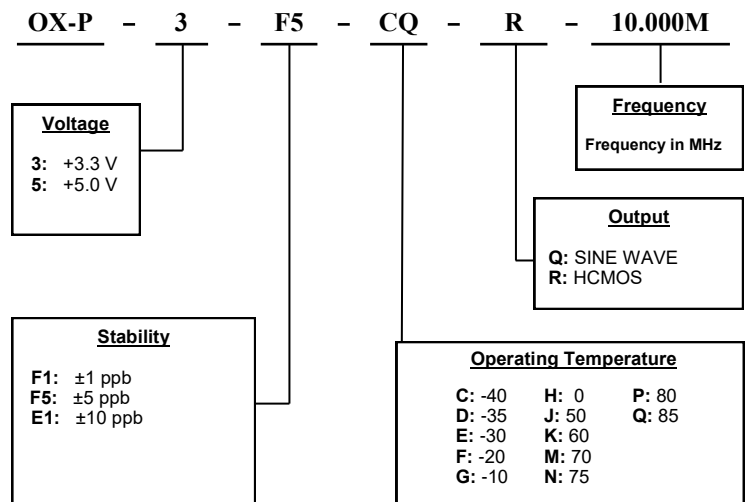


Pin Configuration	
1	VC
2	V Ref
4	GND
5	Output
8	Vcc

■ TEST CIRCUIT



■ PART NUMBERING GUIDE



Transko Electronics, Inc reserves the right to make changes to the product (s), service (s), and specification (s) described herein without notice. See "Terms of Sale" for details on our website.