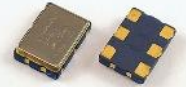


CERAMIC SMD LVDS OUTPUT OSCILLATOR (7.0 x 5.0 x 1.6mm)

FEATURES:

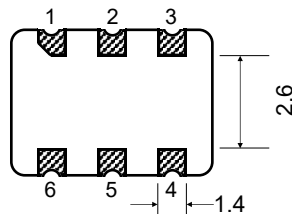
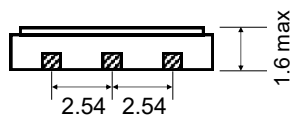
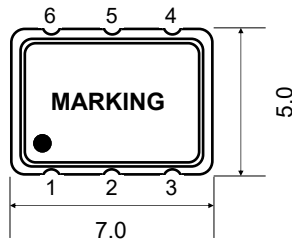
- HIGH FREQUENCY
- ULTRA LOW PHASE JITTER PERFORMANCE
- ENABLE / DISABLE



■ SPECIFICATION

FREQUENCY RANGE	1.8V: 13.5MHz ~ 212.5MHz	2.5V: 12MHz ~ 312.5MHz	3.3V: 12MHz ~ 800MHz
FREQUENCY STABILITY	±15ppm ~ ±100ppm		
OPERATING TEMPERATURE RANGE	STD: 0°C ~ 70°C, Option: -40°C ~ 85°C (See P/N guide for other options)		
STORAGE TEMPERATURE RANGE	-55°C ~ 125°C		
SUPPLY VOLTAGE ± 10%	1.8V	2.5V	3.3V
SUPPLY CURRENT	60mA max.	80mA max.	100mA max.
LVDS OUTPUT	LOAD	100Ω (Output - Complementary Output)	
	LEVEL LOGIC '1' (V_{OH})	1.4V _{DC} typ. 1.6V _{DC} max.	
	LEVEL LOGIC '0' (V_{OL})	1.1V _{DC} typ. 0.9V _{DC} min.	
	DIFFERENTIAL OUTPUT VOLTAGE	0.247V ~ 0.454V, 0.350V typ.	
	OFFSET VOLTAGE	1.125V ~ 1.375V, 1.25V typ.	
	SYMMETRY(DUTY CYCLE)	STD: 40% / 60%, Option: 45% / 55%	
	RISE AND FALL TIME (Tr/Tf)	250pS typ. 1nS max. @ 20% / 80%	
START-UP TIME	5mS typ. 10mS max.		
	ENABLE (V_{IH})	0.7 x V _{DD} ≤ V _{IH} ≤ V _{DD} or N/C	
STAND-BY VOLTAGE	DISABLE (V_{IL})	V _{IL} ≤ 0.3 x V _{DD}	
AGING @ +25°C ±3°C	±3.0ppm / 1 st year max., ±5.0ppm / 10 years max.		
PHASE JITTER (12kHz ~ 20MHz)	1.0pS max.		

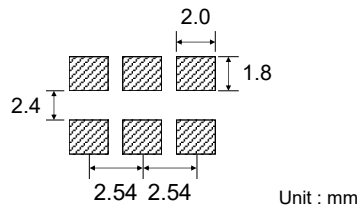
■ PACKAGE DIMENSIONS



Unit : mm

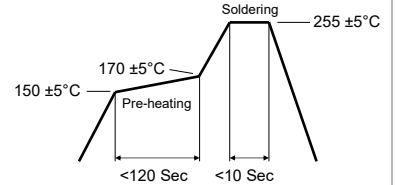
Pin Configuration	
1	En/Dis or N.C.
2	En/Dis or N.C.
3	GND
4	Output
5	C - output
6	V _{DD}

■ SOLDER PATTERN



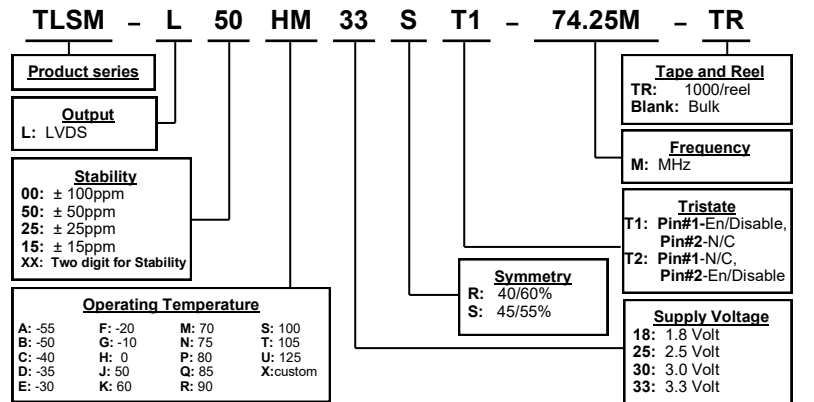
Unit : mm

■ REFLOW PROFILE



Note: Consult factory for detail

■ PART NUMBERING GUIDE



Transko Electronics, Inc reserves the right to make changes to the product (s), service (s), and specification (s) described herein without notice. See "Terms of Sale" for details on our website.