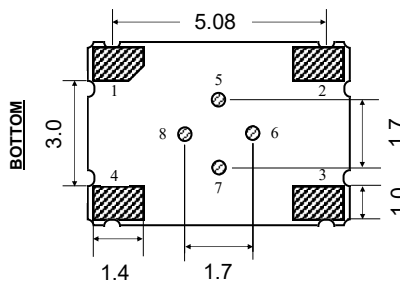
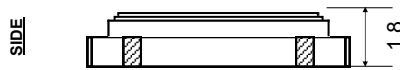
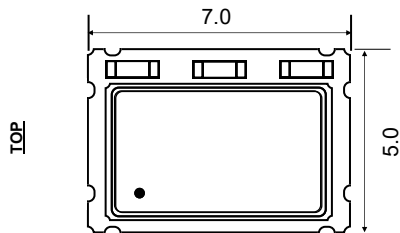


**TCXO/VCTCXO CERAMIC SMD (7.0 x 5.0 x 1.8mm)**
**FEATURES:**

- 3.3V SUPPLY VOLTAGE
- CLIPPED SINEWAVE OUTPUT
- SUITABLE FOR REFLOW

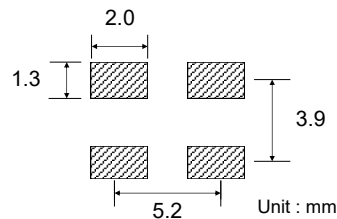

**■ SPECIFICATION**

PARAMETER		MIN.	TYP.	MAX.	UNIT	NOTE
FREQUENCY RANGE		10		27	MHz	
FREQUENCY STABILITY	vs. TEMPERATURE RANGE	±1.0		±2.5	ppm	See P/N guide for other options
	vs. LOAD ± 10%			±0.3	ppm	
	vs. SUPPLY VOLTAGE ± 5%			±0.3	ppm	
	vs. AGING			±1.0	ppm/year	@ 25°C
OPERATING TEMPERATURE RANGE		-40		85	°C	See P/N guide for other options
STORAGE TEMPERATURE RANGE		-55		125	°C	
SUPPLY VOLTAGE ±5%		3.135	3.3	3.465	V	See P/N guide for other options
SUPPLY CURRENT				2.0	mA	
OUTPUT	LOGIC FAMILY	Clipped Sine Wave				
	LOAD	10kΩ//10pF				
	LEVEL	0.8			V <sub>P-P</sub>	
	START-UP TIME			3	mS	
FREQUENCY DEVIATION				±8.0	ppm	
AGING				±1.0	ppm	
PHASE NOISE	1kHz		-130		dBc/Hz	@ 10.0MHz

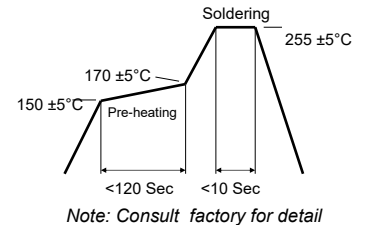
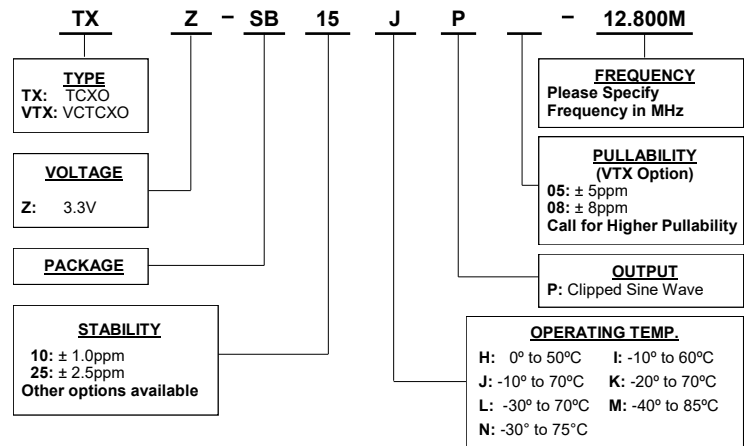
**■ PACKAGE DIMENSIONS**


Unit : mm

Pad Connections	
1	Vc or N.C
2	GND
3	Output
4	Vcc
5	N.C.
6	N.C.
7	N.C.
8	N.C.

**■ SOLDER PATTERN**


Unit : mm

**■ REFLOW PROFILE**

**■ PART NUMBERING GUIDE**


Transko Electronics, Inc reserves the right to make changes to the product (s), service (s), and specification (s) described herein without notice. See "Terms of Sale" for details on our website.